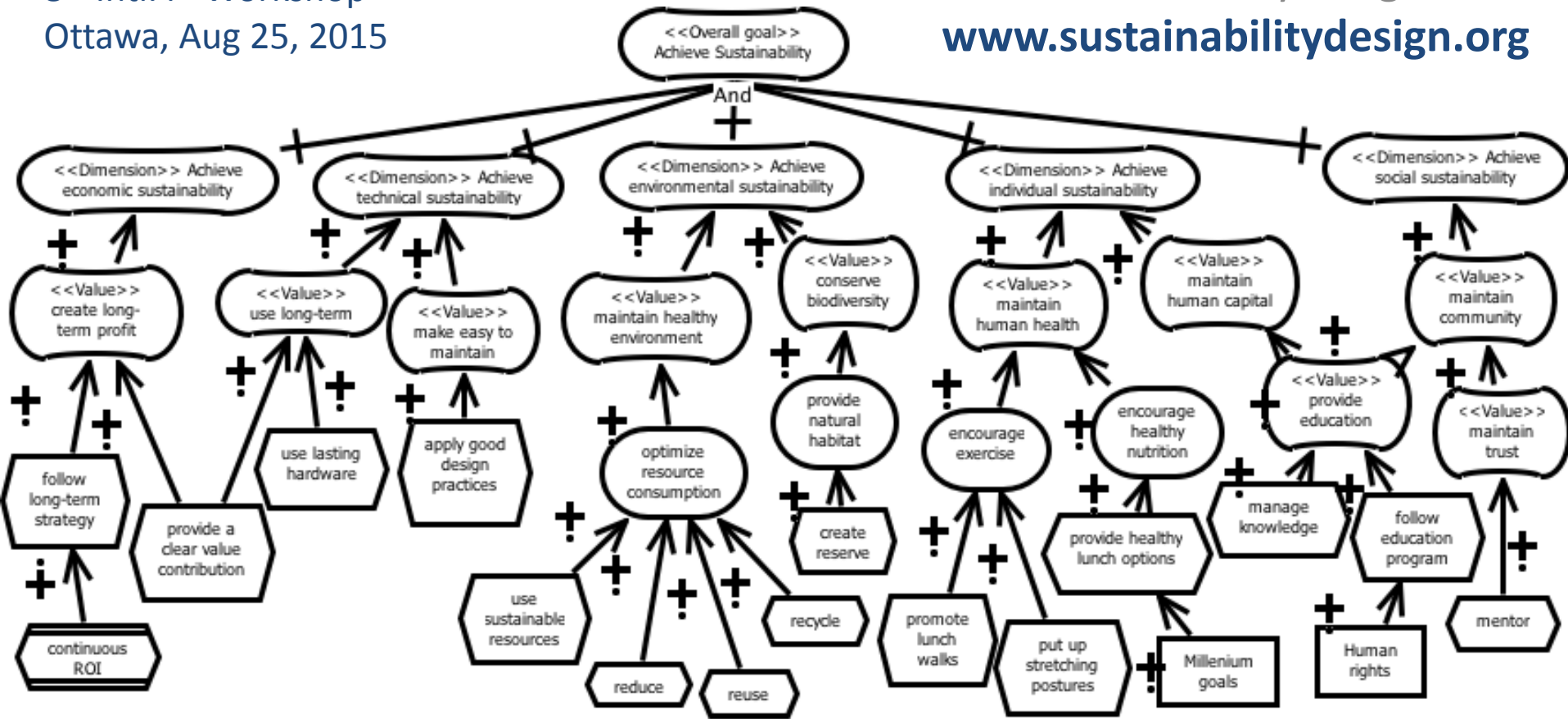


GRL for Representing the Sustainability Reference Model

Birgit Penzenstadler
birgit@penzenstadler.de
Twitter @twinkleflip

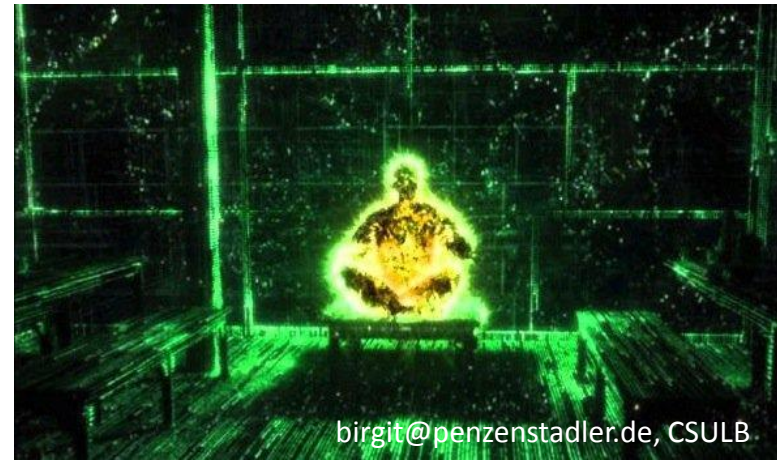
8th Intl. i* Workshop
Ottawa, Aug 25, 2015

California State University Long Beach
www.sustainabilitydesign.org



In a nutshell:

- [Context]
 - Sustainability: often fuzzy arguments
 - Previous work: reference model for sustainability
- [Problem] Reference goal model not standardized notation
- [Contribution] Use GRL to represent
- [Impact]
 - Broader understanding of how to decompose and handle
 - Formalized basis for reasoning
 - We hope to engage in community discussion

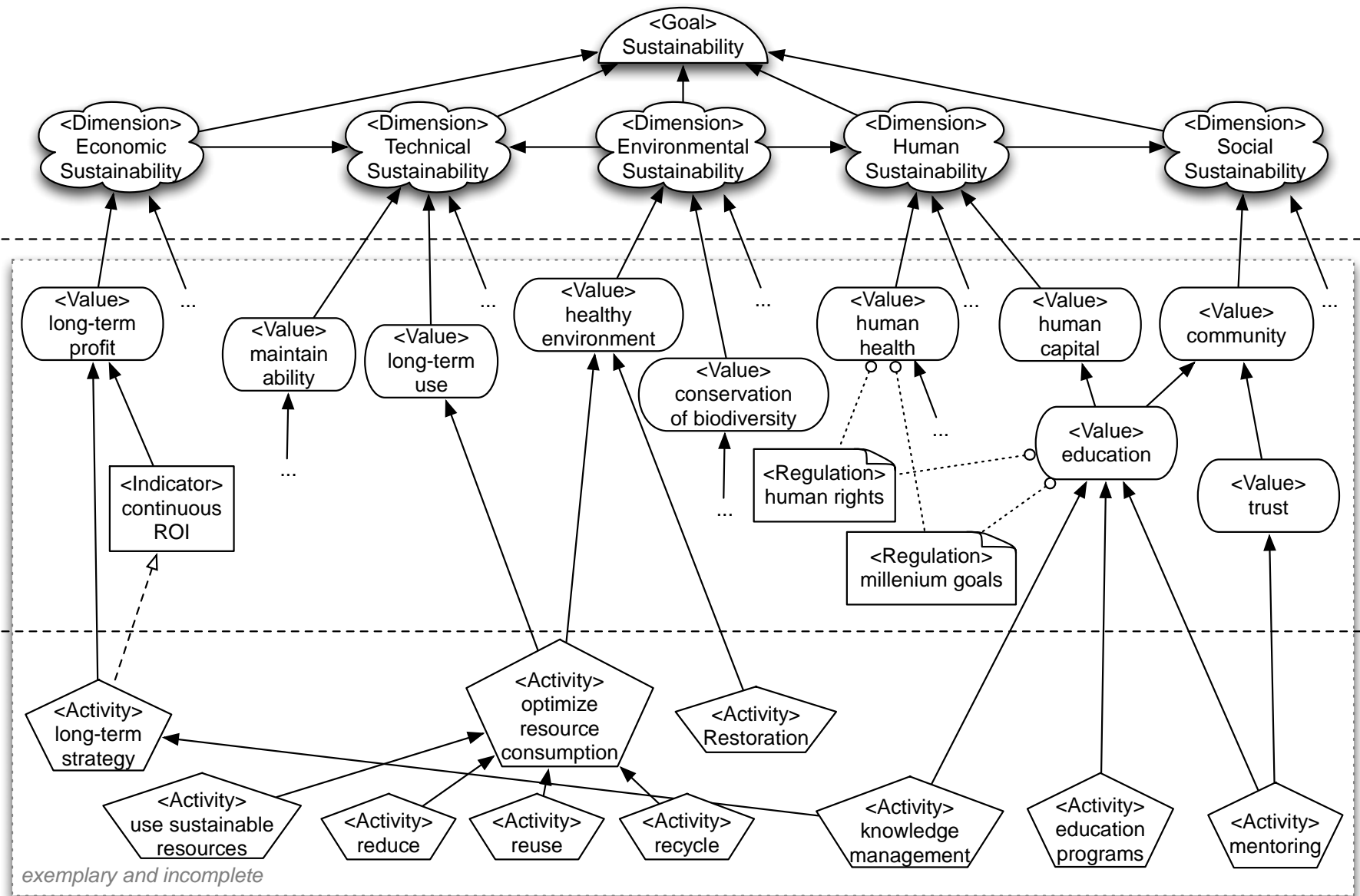


Software Engineering for Sustainability

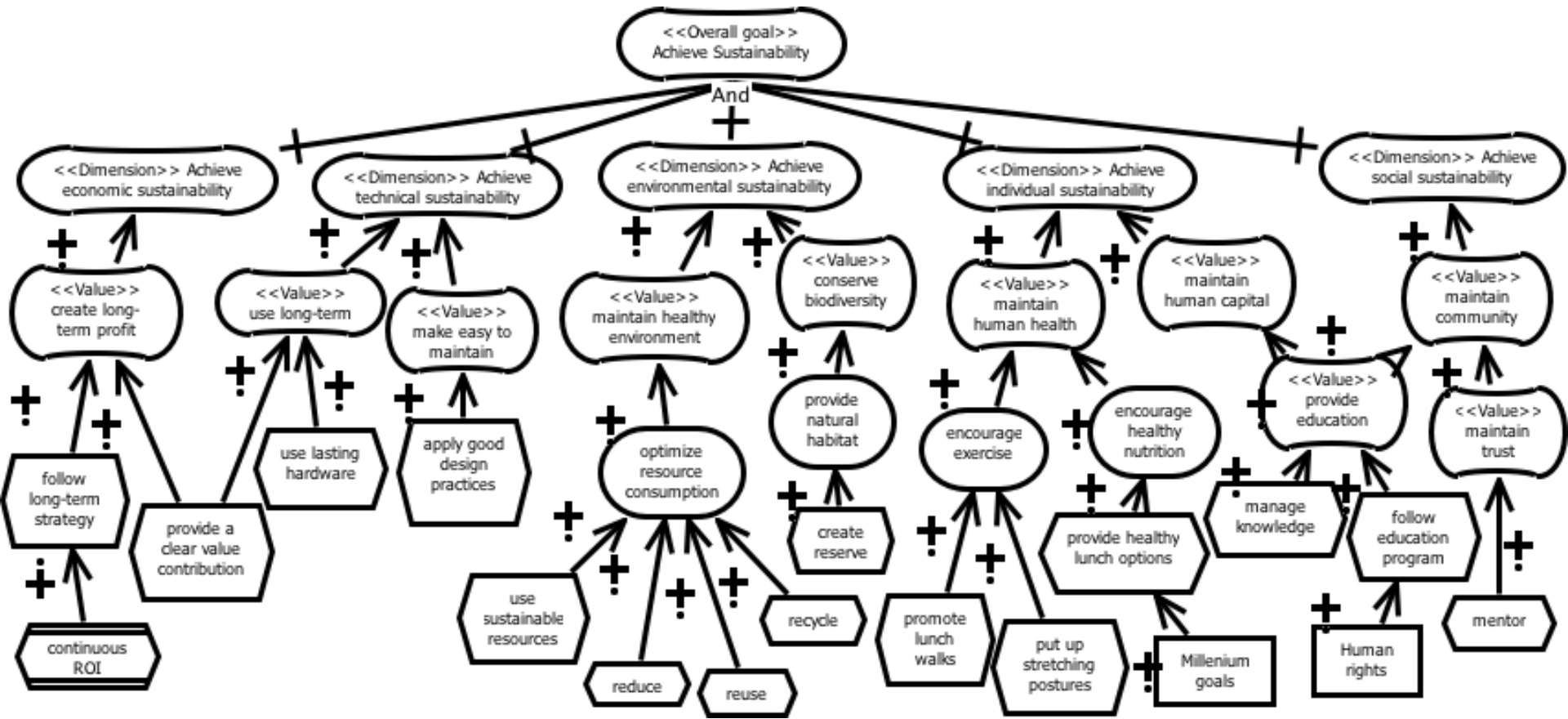
- Sustainability: All forms of life flourish forever. [Ehrenfeld], includes different dimensions – environmental, but also social.
- For software systems
 - Domain-dependent sustainability
 - Domain-independent sustainability
- Software Engineering for Sustainability (SE4S): Translation and refinement from domain- dependent sustainability requirements to domain-independent requirements and then further development.



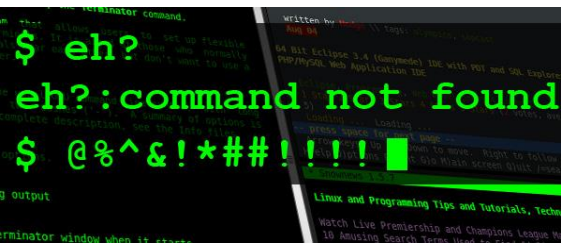
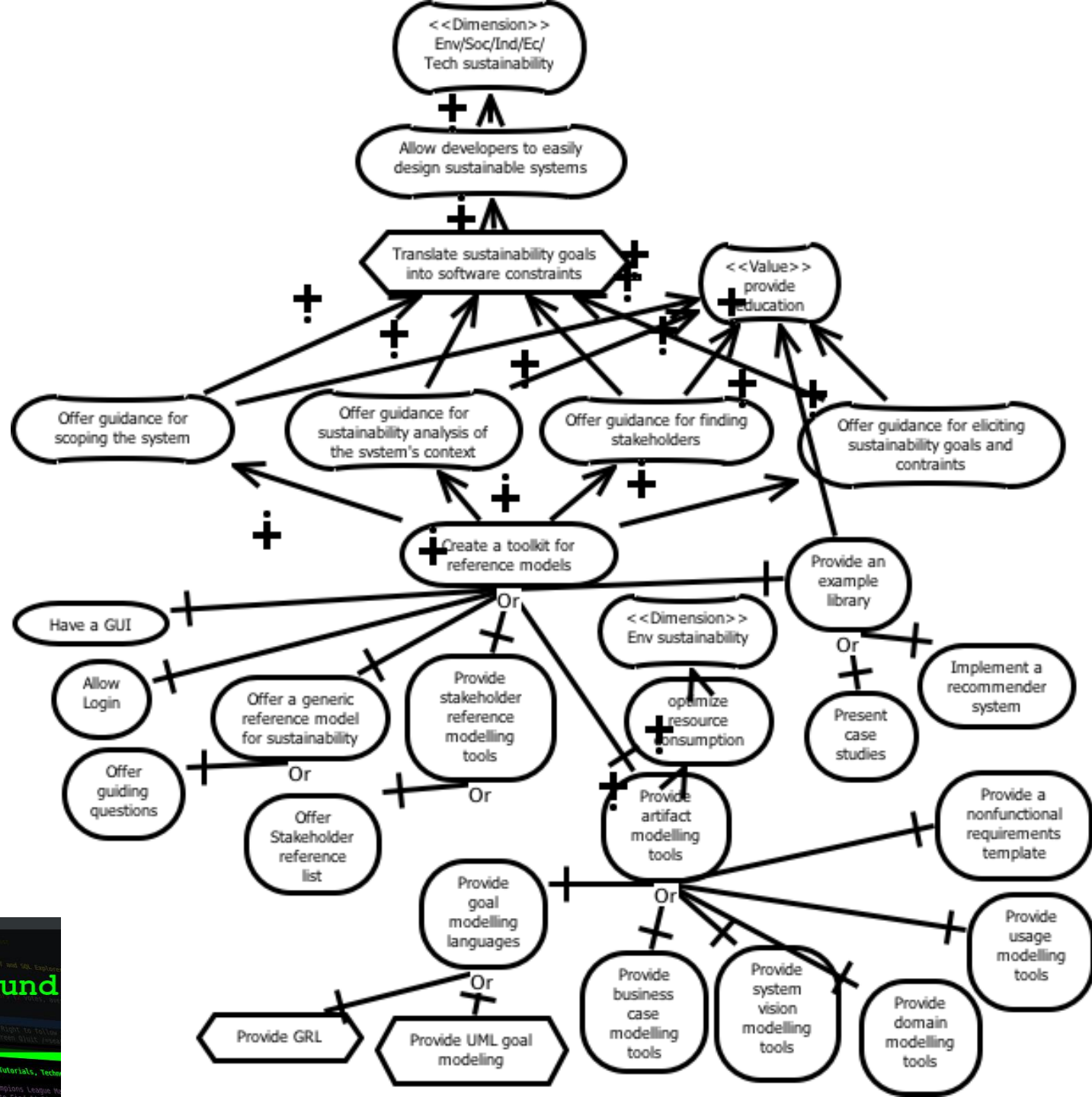
Old sustainability reference model



New sustainability reference model

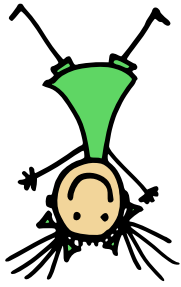


Tool support goal model



Discussion

- Choice of GRL Notation: GRL because of direct support for indicators
- Expressiveness of New Model: Initial loss of information resolved by using metadata.
- Analysis and Reasoning: Qualitative and quantitative, weighting of goals, assessments.
- Future Work: Actors and Tooling.



Conclusion and Future Work

- Take-away Message.
 - Sustainability goal reference model in GRL allows for reasoning with qualitative and quantitative data.
 - Intended to serve as guidance and checklist for software engineers who want to include the goal of sustainability into their development.
- Future work includes:
 - Adding actors
 - Online tool support inspired by jUCMNav
- Special thanks to: Jennifer Horkoff, Gunter Mussbacher, Daniel Méndez, Leticia Duboc, and *Reviewer 1*

@twinkleflip

birgit@penzenstadler.de, CSULB